

# How To Run A Mac Server:

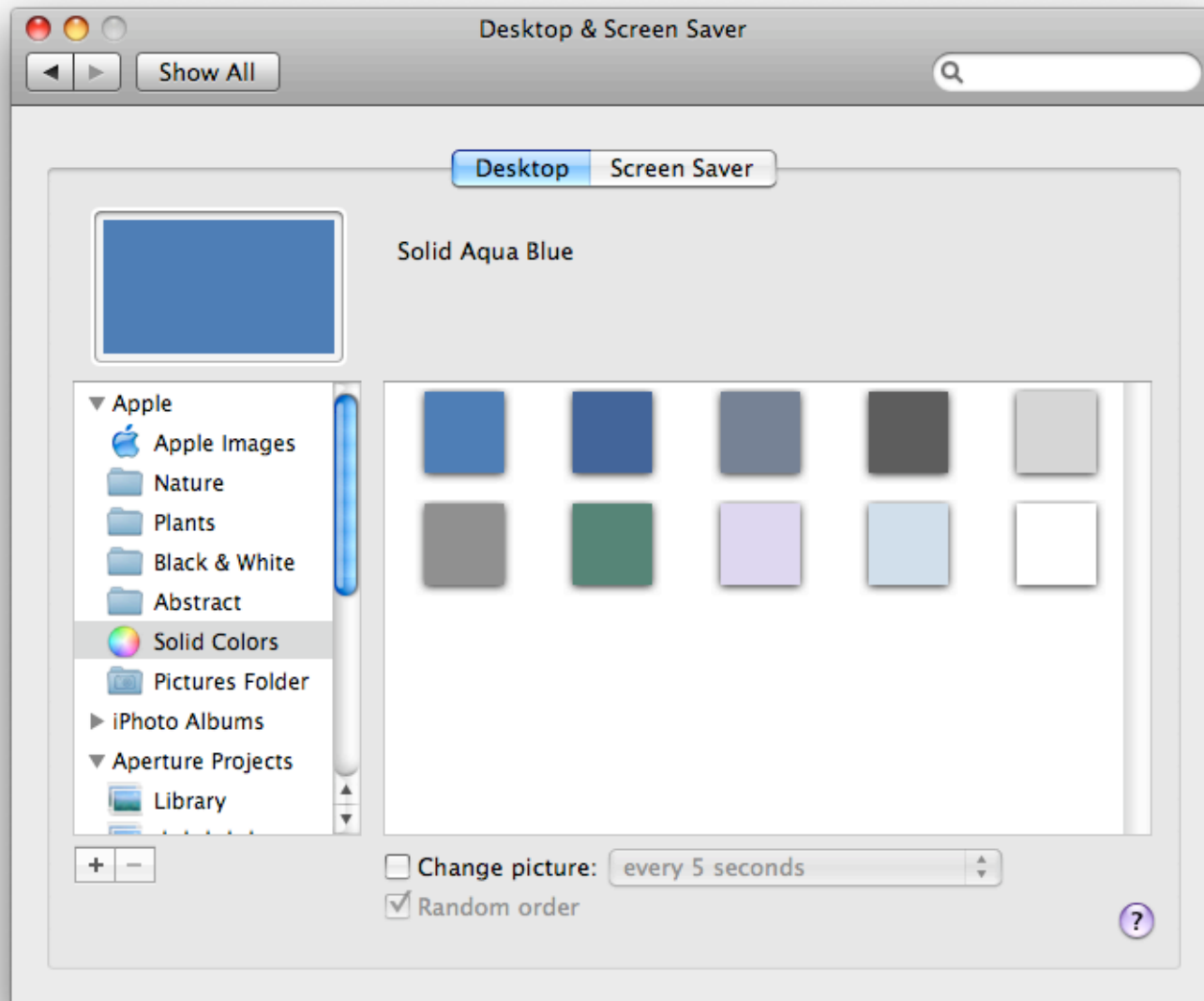
# Initial Setup



By Brian Stucki  
[Macminicolo.net](http://Macminicolo.net) - Your Mac mini in a data center. The perfect low-cost server.  
[FarAwayMac.com](http://FarAwayMac.com) - Tips on running a Mac server.

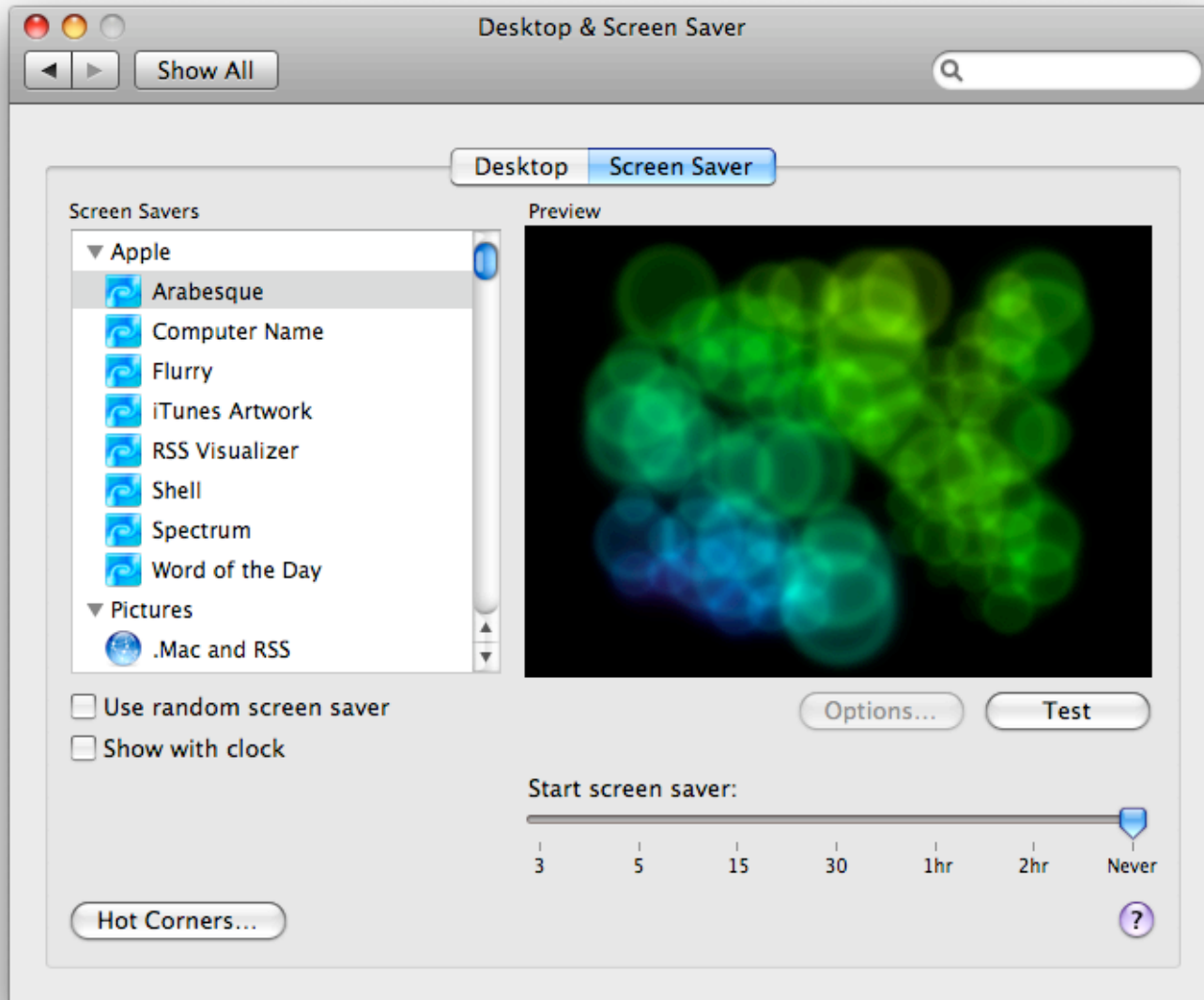


System Preferences can be opened from the dock, or from the Apple Menu.

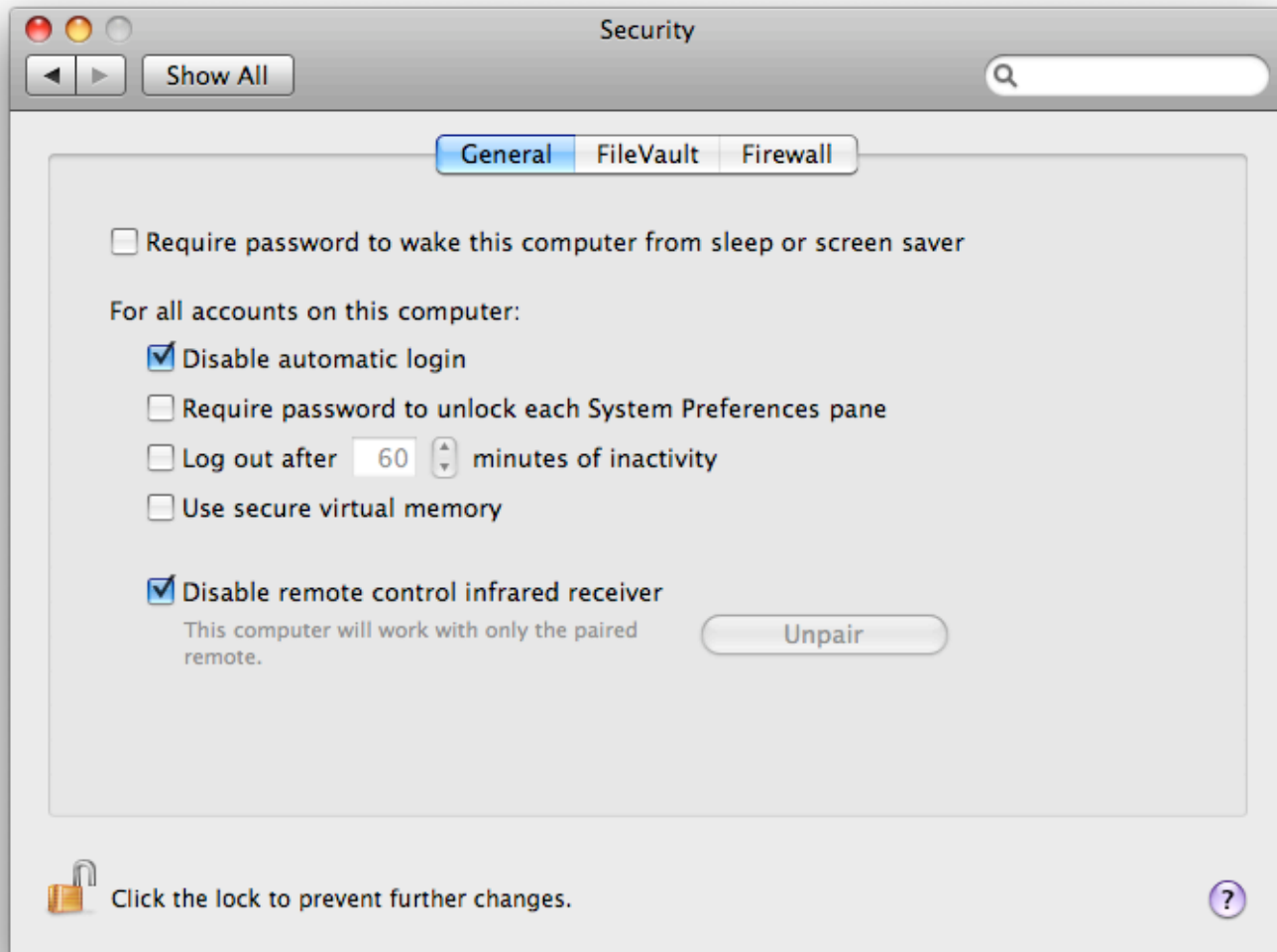


In the “Desktop & Screen Saver” pane, it is a good idea to change your desktop to a solid color. This allows for better performance when using a remote control app.

If you have more than one server, consider different colors for each machine or location.

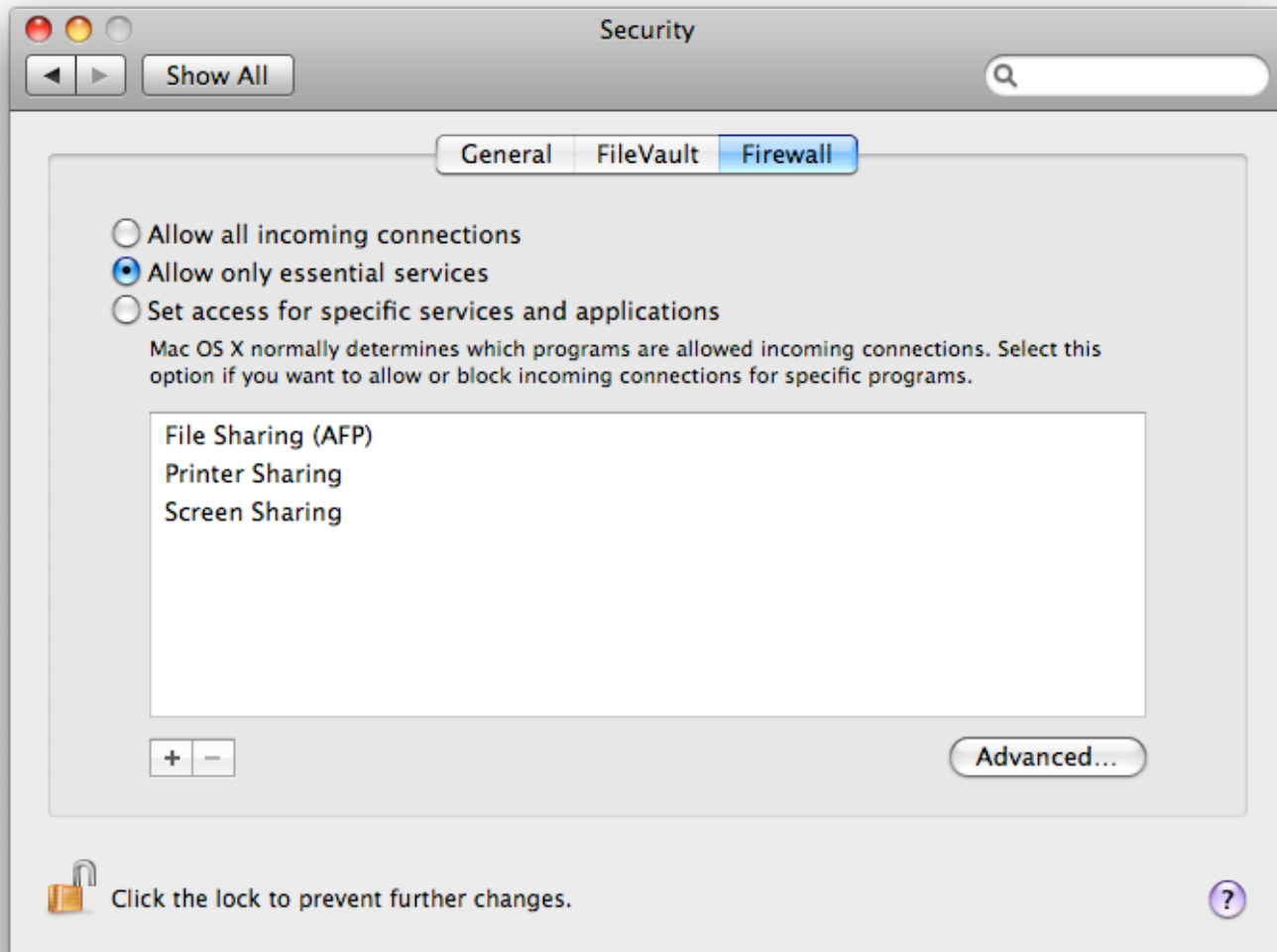


If you will not have a monitor on your server, it is a good idea to set the screen saver to start "Never." This saves you from the VNC bug that will sometimes make the screen unreadable when awakened from a Screen Saver.



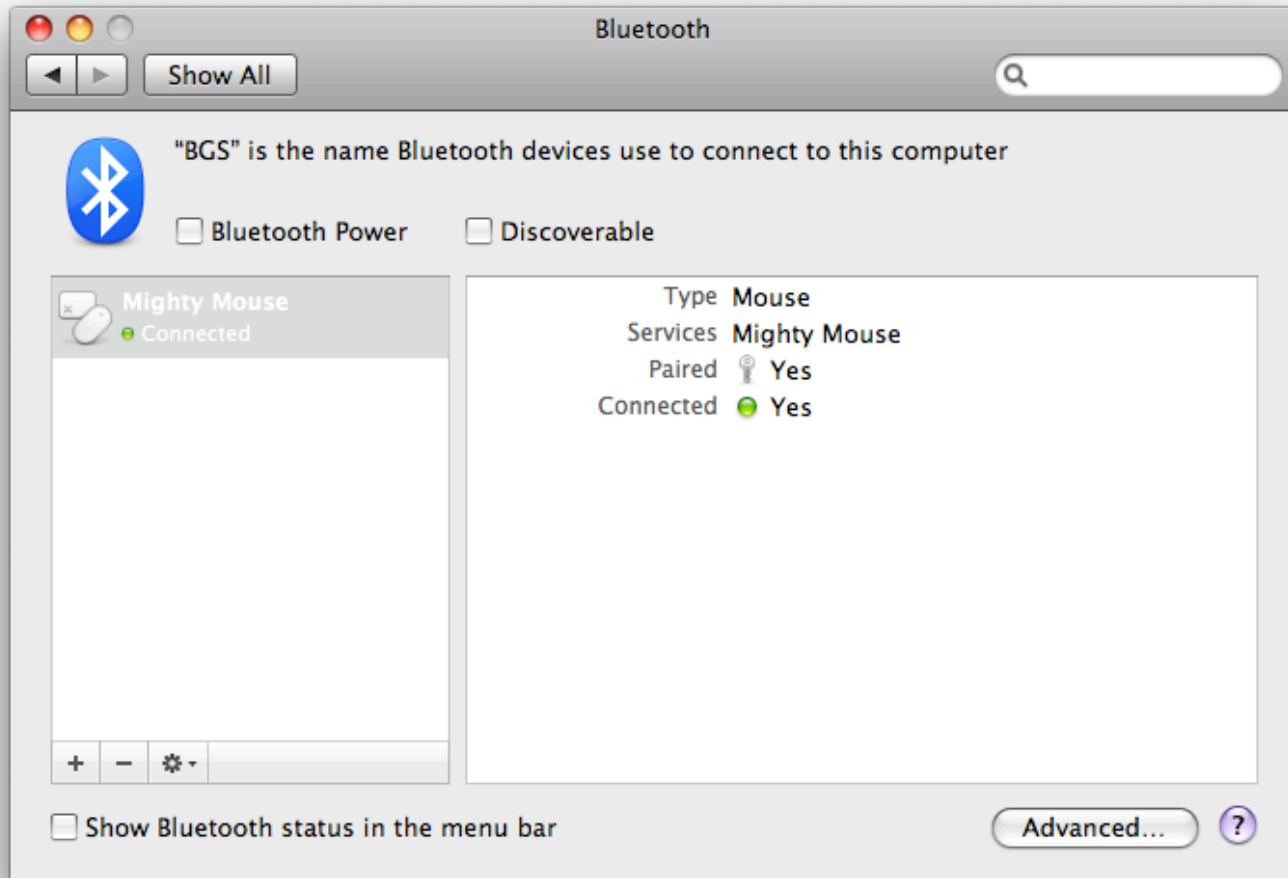
Under Security, be sure to disable Automatic login. This will help your machine stay secure after a restart.

Out of the box, any Apple Remote will work with any machine. If your Mac is an Intel machine with an infrared receiver, disable the receiver.



Still under the Security tab, enable the firewall.

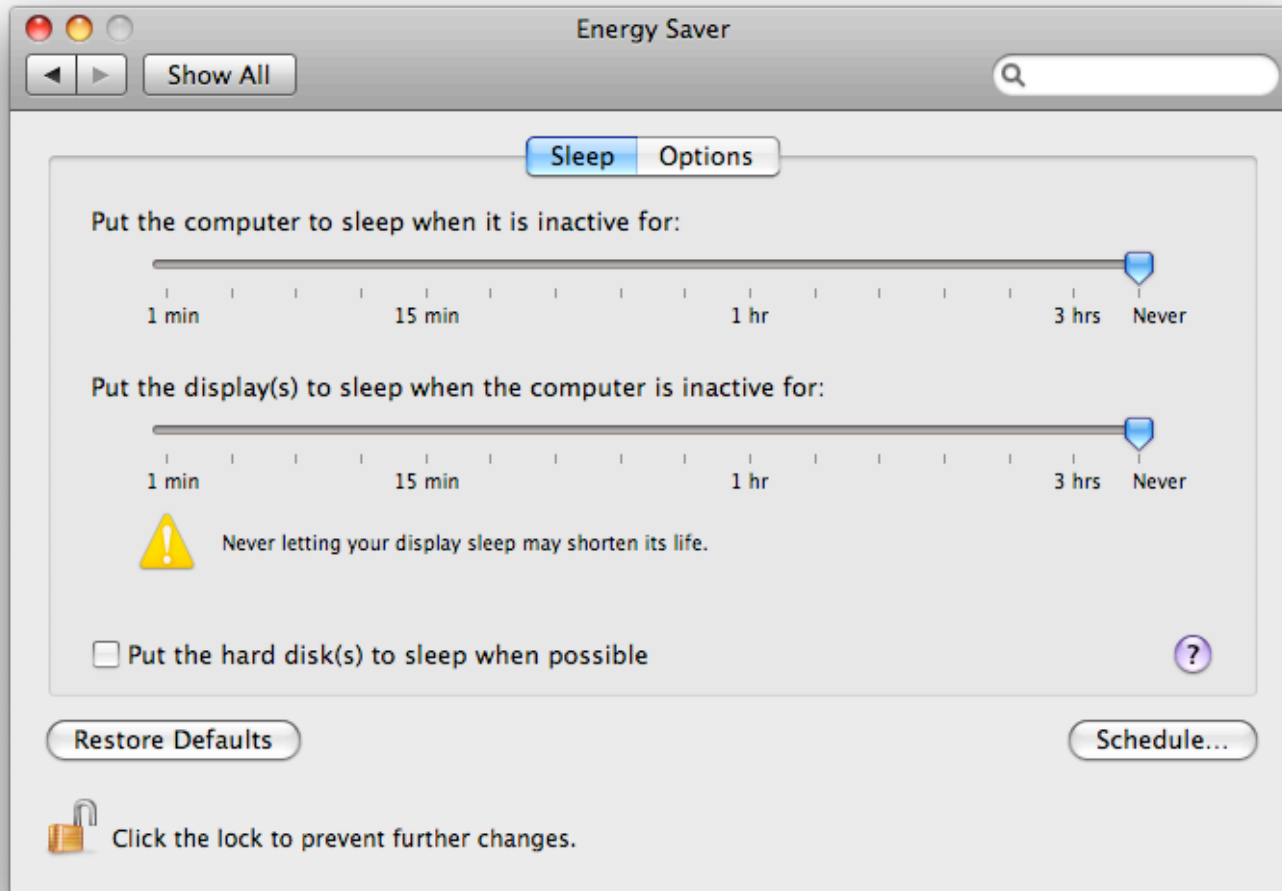
If you are configuring this server remotely, you'll want to be sure any ports are open prior to enabling so you are not locked out of your machine.



Under the Bluetooth pane, you have two options.

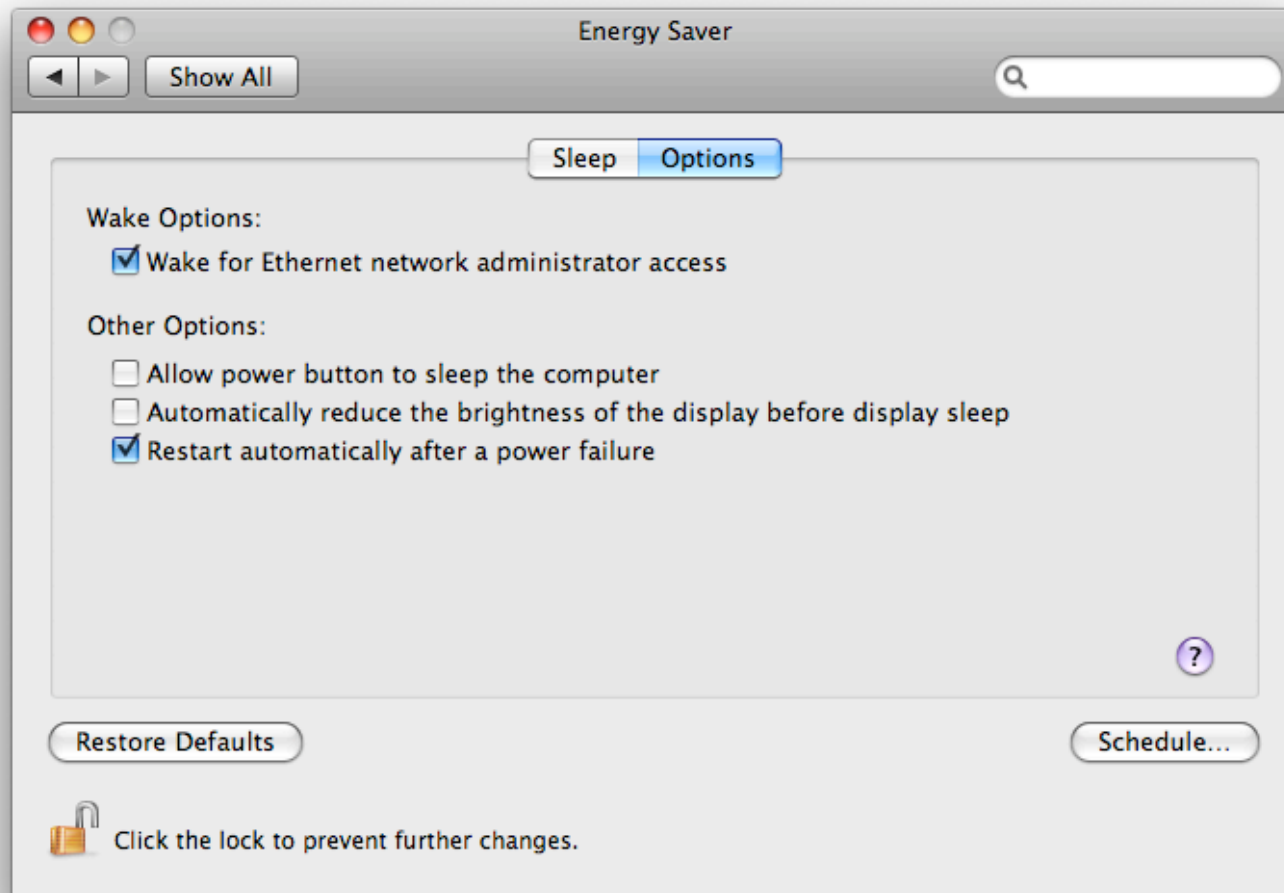
If you are not going to use bluetooth peripherals, just power off bluetooth.

If you are going to periodically use bluetooth controls, you'll still want to disable the Bluetooth Setup Assistant found under the Advanced tab. This will allow the machine to restart during those times when you do not have your keyboard and mouse connected.



Under Energy Saver, bring both sliders over to "Never."

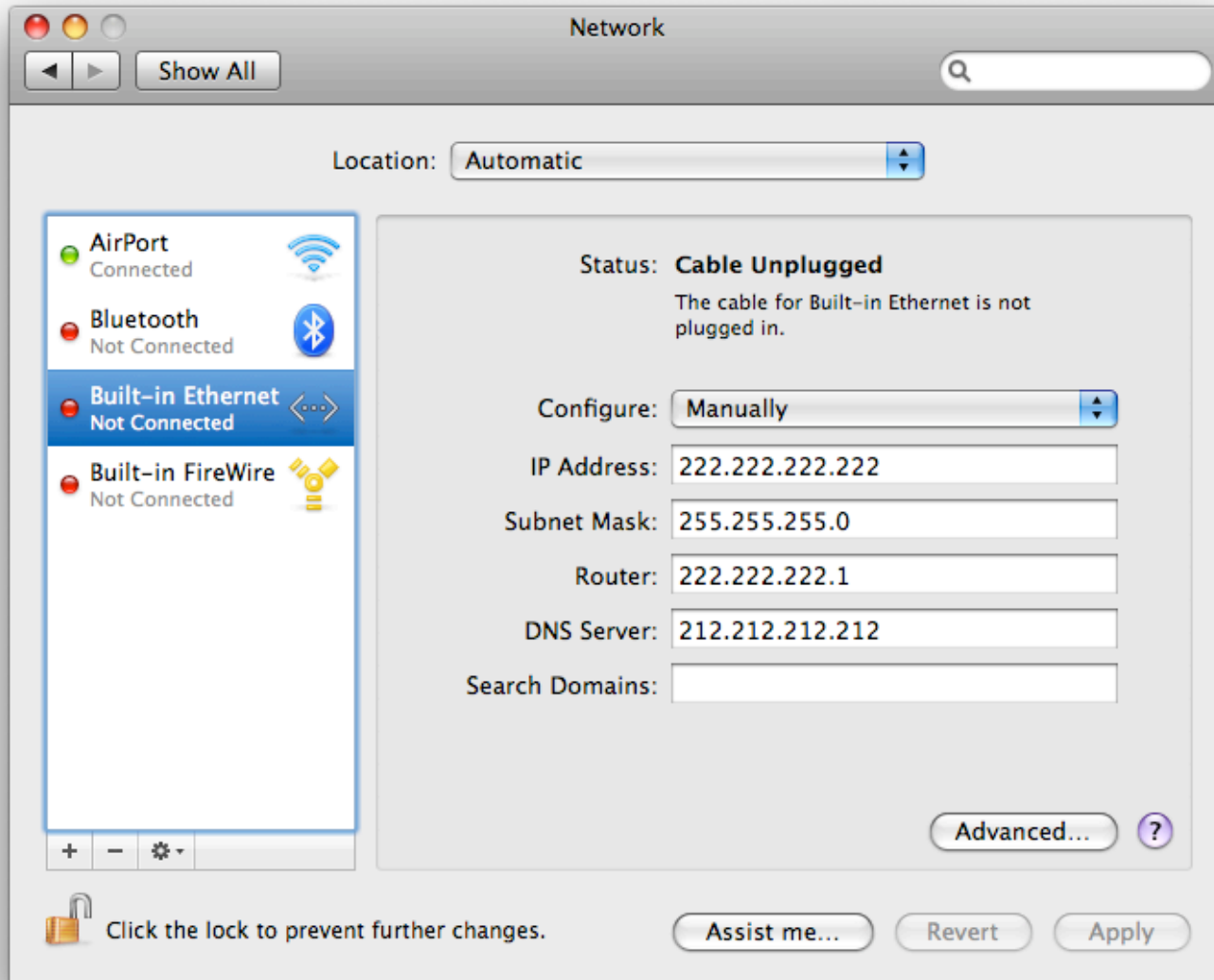
Also, uncheck the box that allows the hard disks to sleep.



Clicking on the Options tab will give you four more options.

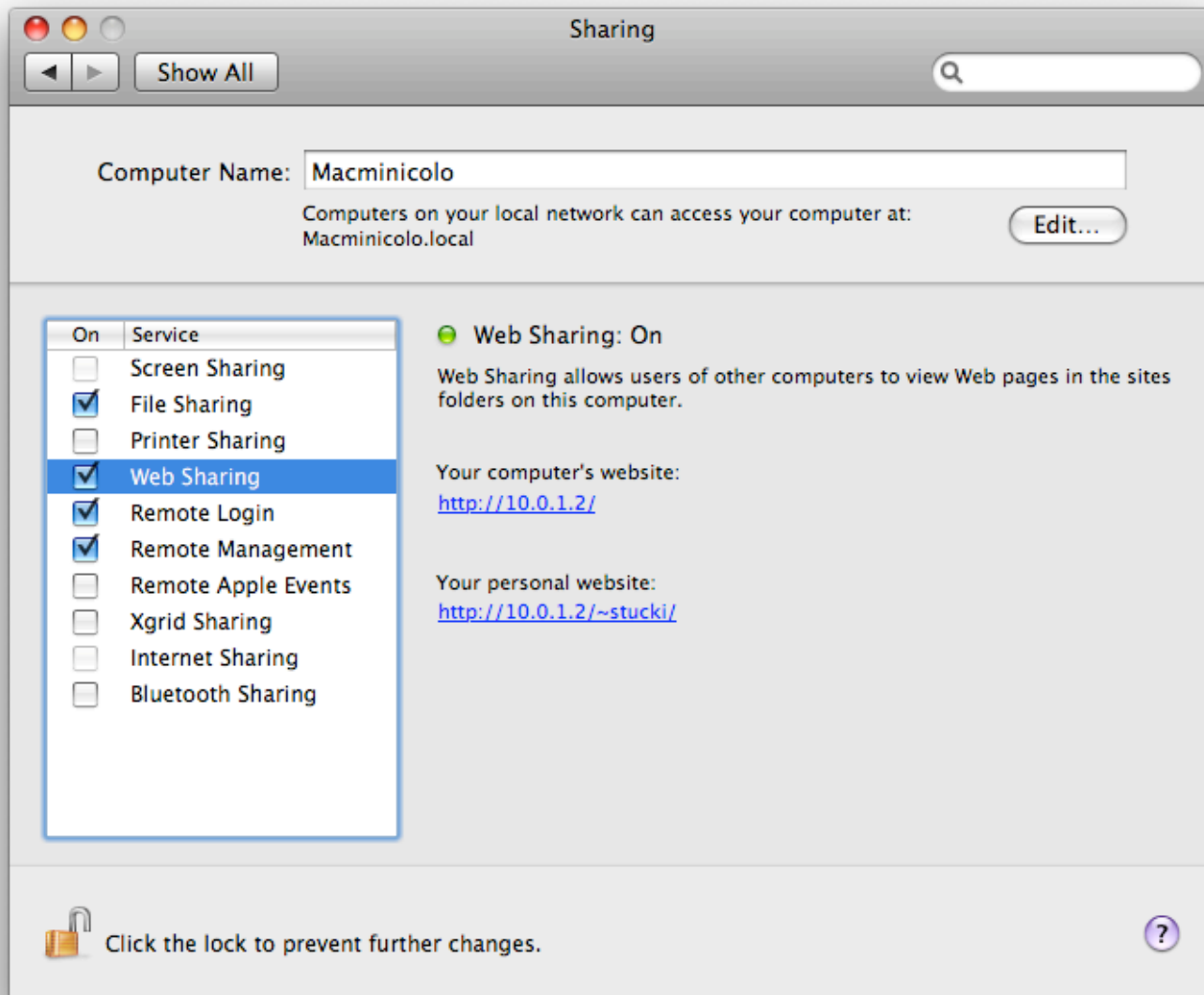
Set the machine to restart automatically after a power failure.

Don't allow the power button to sleep the computer. This will help avoid accidental downtime when the button is inadvertently pushed.



Servers should have a static ip address. Under the Network tab, set to configure manually and then enter the network information.

Press apply.



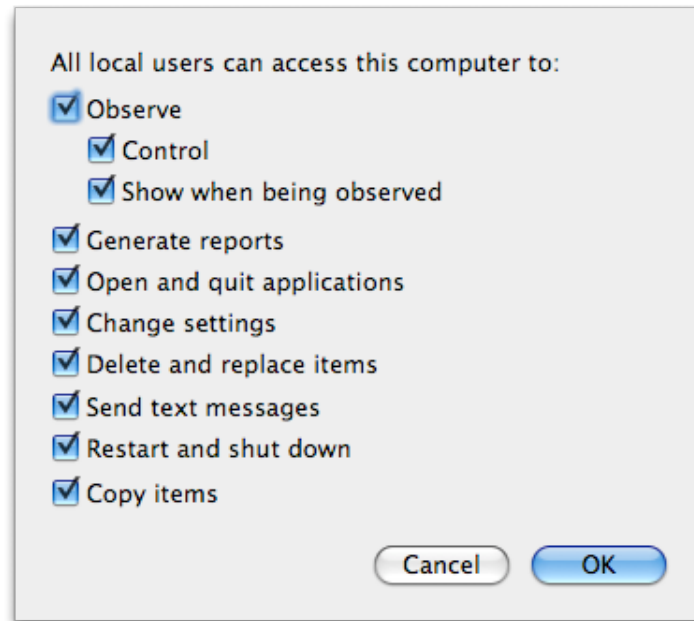
In the Sharing pane, enable the options you'd like to run. Common services include:

File Sharing for allowing FTP and AFP to your server.

Web Sharing for hosting a website.

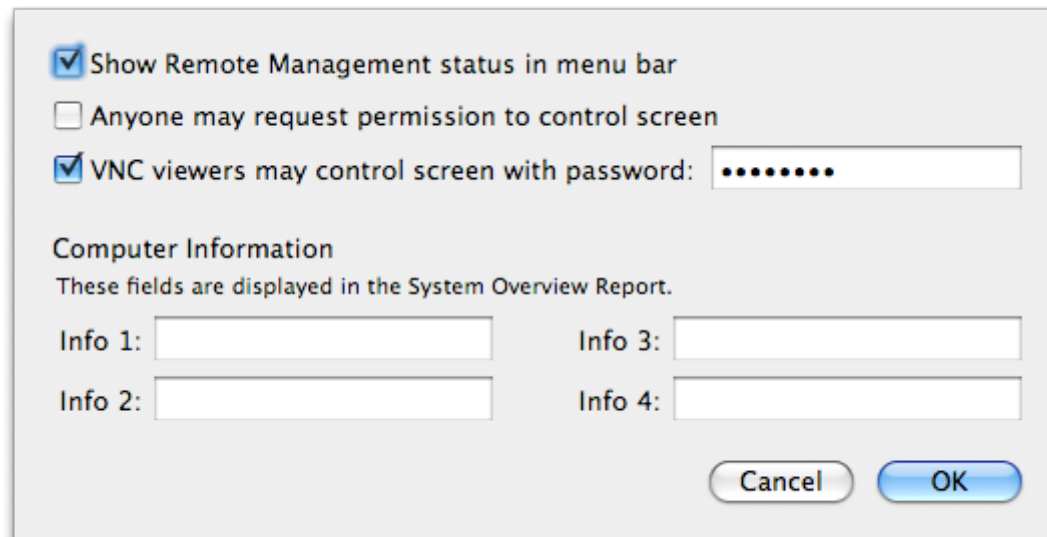
Remote Login to connect via SSH. This is very useful for a second option of control when VNC/ARD is not working.

Remote Management to enable ARD and VNC for control of your server. (See next page for options.)

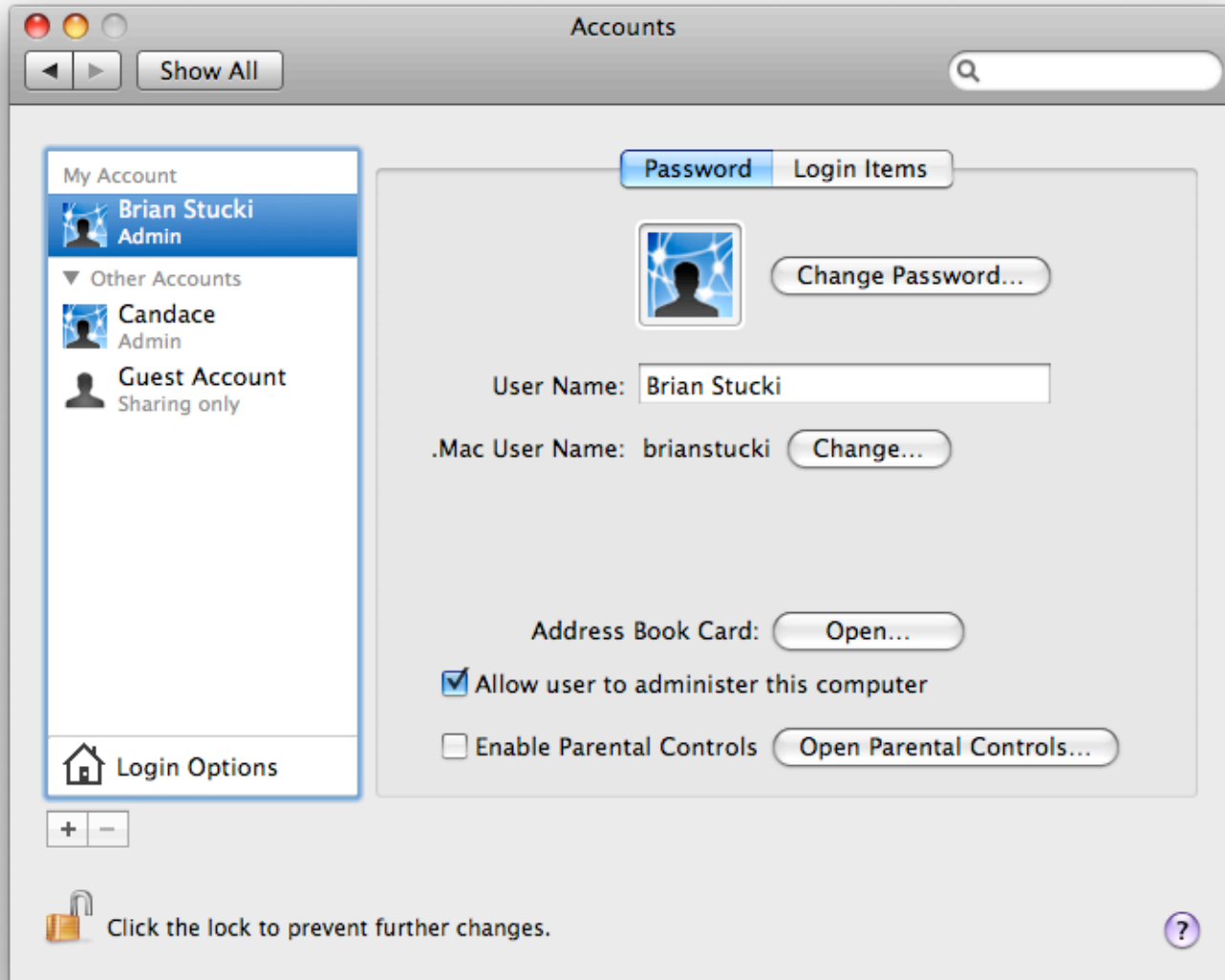


When enabling Remote Management, you'll be asked to set the permission on what a user can do.

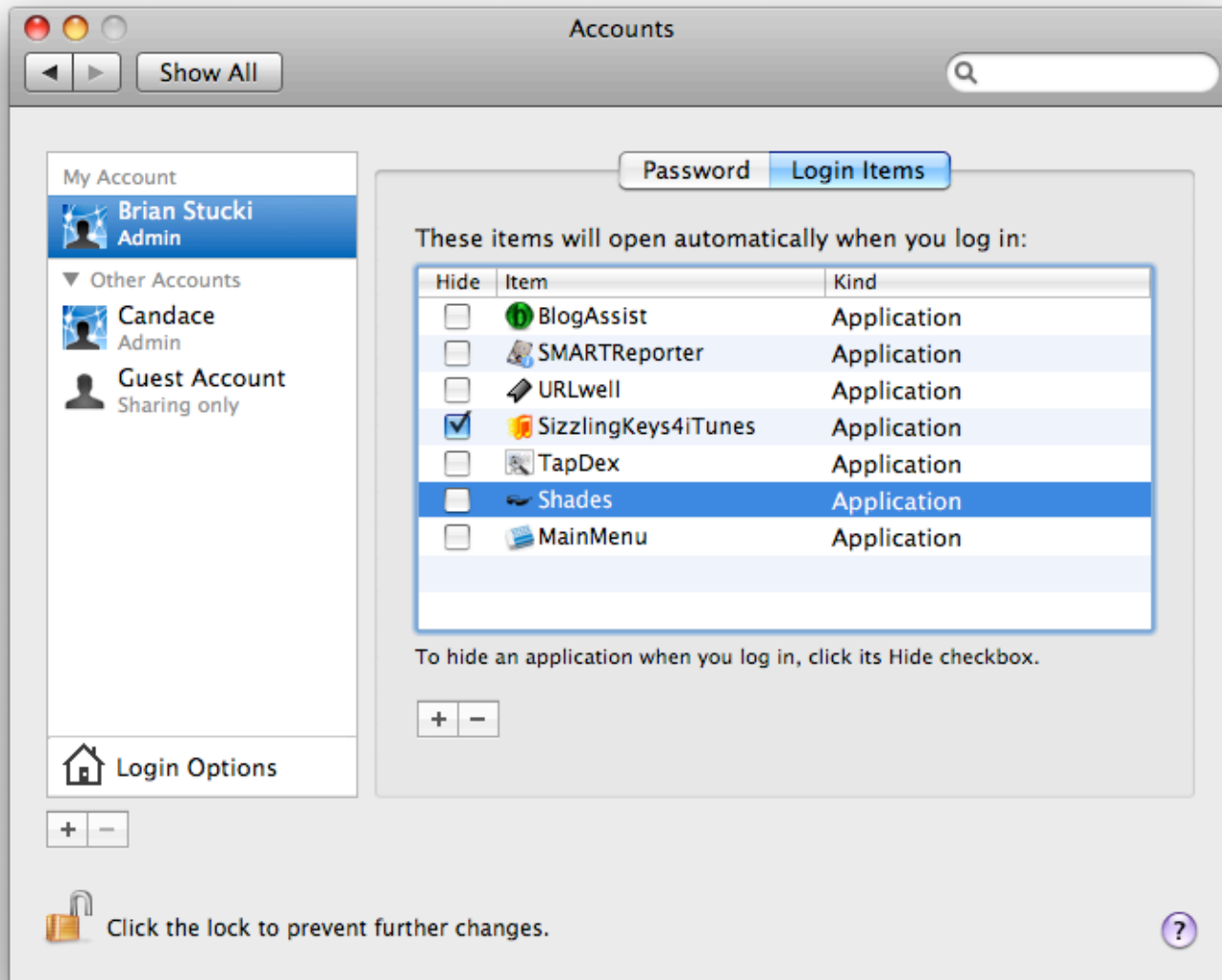
Tip: Hold down Option when clicking the first box and all remaining boxes will check as well.



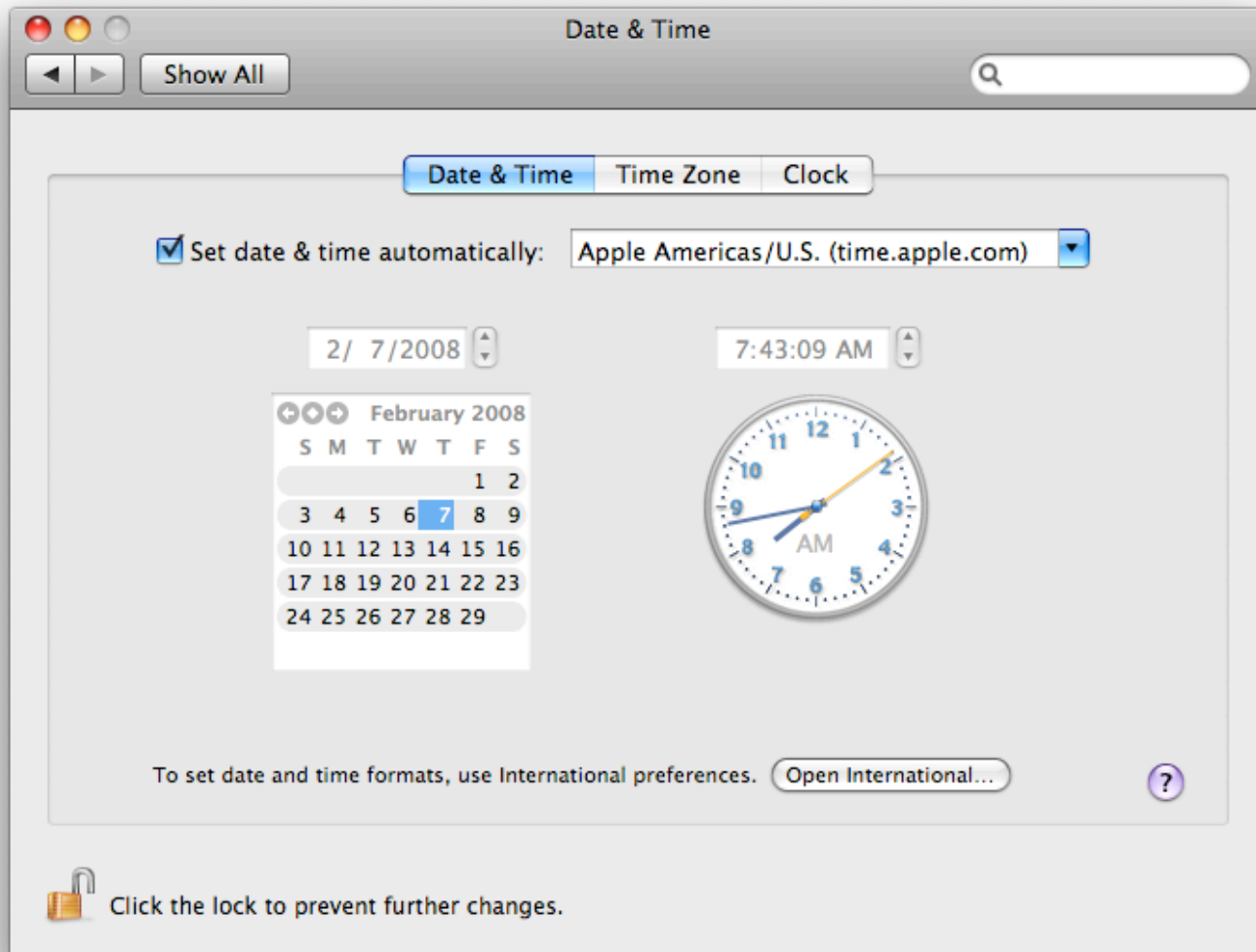
When setting Remote Management, click the "Computer Settings" button to enable VNC and set a password.



Under Accounts, set up your users and select those that can administer the machine. Be sure to set a password for security.



Switch to the Login Items to choose which applications you'd like to start automatically on a restart.

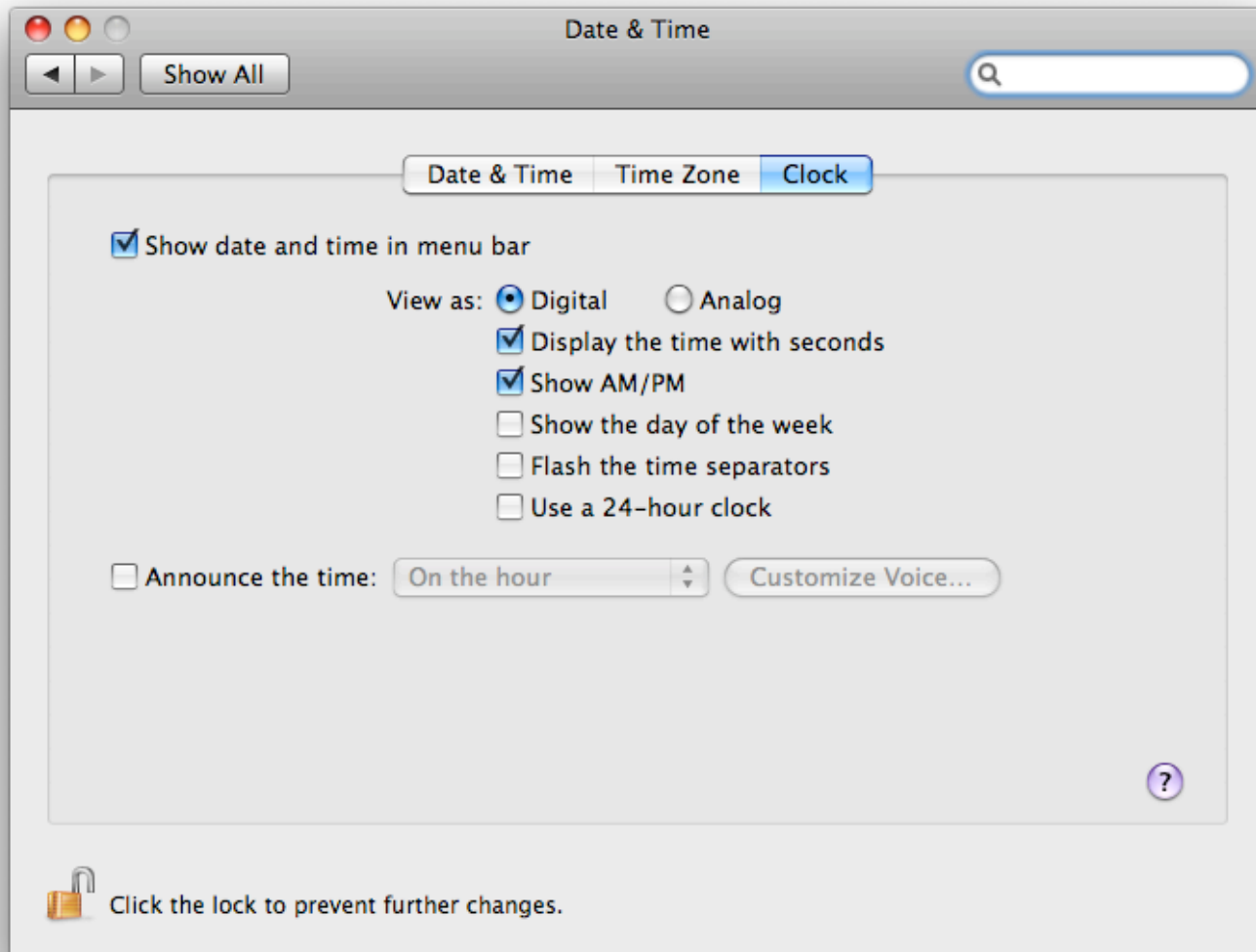


Under Date & Time, it is usually easiest to set date & time automatically.

If your server will only be used on a LAN and not have an internet connection, set it manually.



Set your Time Zone under the next tab.



Under Clock, set to display the time with seconds. This is useful when controlling the machine remotely. If ever it appears locked up, you can reference the seconds ticking to see if it is just the app or the whole machine.



Software Update will allow you to set your machine for weekly checks on updates. This will allow you to keep the latest security on your machine.

Have the apps downloaded automatically, but as they arrive be sure to inspect them individually. Confirm that they won't break your current configuration before installing.

This ebook released under the [Creative Commons](#) license.  
Feel free to distribute it and email it around. Just don't change it and do keep attribution.